



## 30 Sadri Court, NEW NORFOLK, TAS 7140

Move in and enjoy!

Set at the end of a quiet cul-de-sac on a generous and fully landscaped 800m<sup>2</sup> allotment, this beautifully maintained home offers comfortable living in a peaceful setting. Built in 2015, the solid brick veneer and Colorbond construction reflects quality and durability, with the home having been lovingly cared for by its one owner.

The north-facing open plan living, dining and well-appointed kitchen is bathed in all-day

**TYPE:** For Sale

**INTERNET ID:** R24866635

**SALE DETAILS**

**Offers over \$595,000**

The particulars contained herein are supplied for information only and shall not be taken as a representation in any respect on the part of the vendor or its agent. Interested parties should contact the nominated person or office for full and current details.

sun, enhanced by stylish hybrid flooring that adds warmth and practicality. Front windows are tinted for privacy and improved energy efficiency, while a reverse cycle heat pump ensures year-round comfort.

Accommodation comprises bedrooms, all featuring built-in robes, serviced by a family bathroom complete with a separate shower and bath.

The double garage is a standout feature, offering power and a wood heater, creating a versatile space that could serve as a workshop or retreat. Extensive concrete provides additional off-street parking, ideal for vehicles, trailers or guests.

Beautifully presented this quality home combines modern convenience with generous outdoor space, making it an ideal choice for families, downsizers or investors seeking a move-in ready opportunity in a quiet and desirable location.

Located approximately 35 minutes' drive to the Hobart CBD, the picturesque drive along the banks of the River Derwent will be one to enjoy and the location provides the perfect access point for weekend watersports right in the heart of the beautiful & historic Derwent Valley.

Inspections readily available by appointment, call today.

- Land Area 800.00 square metres
- Building Area: 103.00 square metres
- Bedrooms: 3
- Bathrooms: 1
- Car Parks: 3
- Double garage

#### CONTACT DETAILS

**Elders Hobart**  
5 Victoria Street  
HOBART, TAS  
03 6220 6999

**Jodi Hansson**  
0409 976 994









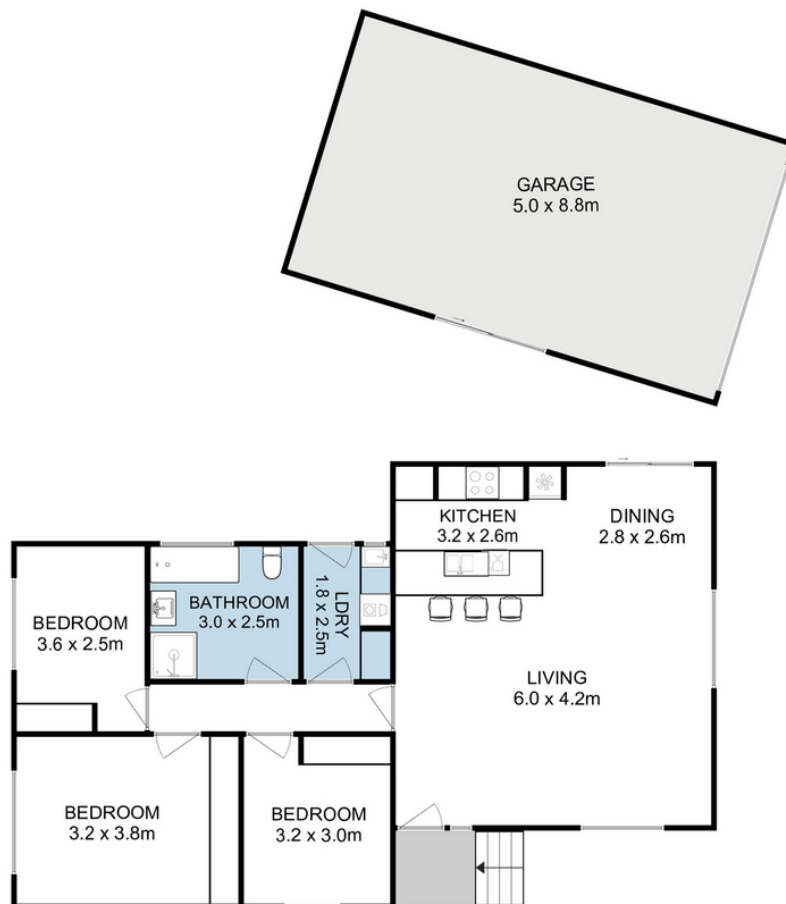












Total Approx. Floor Area : 90 sqm  
Total Approx. Outbuilding Area : 44 sqm

All measurements are internal and approximate.  
This plan is a sketch for illustration, not valuation.  
Produced by Open<sup>2</sup>view.com