



15 Lansdowne Crescent, WEST HOBART, TAS 7000

Light-filled, city fringe living

Positioned within a secure and tightly held complex, this contemporary townhouse presents a refined, low-maintenance lifestyle in one of West Hobart's most sought-after, blue-chip settings. Designed over two levels, the home offers privacy, natural light and easy-care living, surrounded by established residences.

The townhouse has been thoughtfully modified from the original three-bedroom plus

TYPE: For Sale

INTERNET ID: R24876656

SALE DETAILS

Offers over \$895,000

The particulars contained herein are supplied for information only and shall not be taken as a representation in any respect on the part of the vendor or its agent. Interested parties should contact the nominated person or office for full and current details.

study design, with the upstairs second bedroom removed to create a more spacious open-plan living and dining area. This reconfiguration enhances flow and functionality, while retaining the flexibility to reconfigure back to a three-bedroom layout if desired.

Glass sliders extend the living space onto a private balcony, capturing elevated outlooks toward the River Derwent and city beyond. The well-appointed kitchen features stone benchtops, quality appliances and generous storage, complemented by a glass window splashback that frames a leafy aspect and brings the outdoors in. The upper level is completed by the master bedroom with built-in wardrobes and a stylish central bathroom.

Downstairs, the second bedroom and home office both open directly onto a private courtyard. A second bathroom services this level, while a cleverly integrated laundry beneath the stairwell ensures space is utilised efficiently without compromise.

Additional features include two reverse cycle air conditioners, one on each level for year-round comfort, a remote-access garage with internal entry, excellent storage throughout, and the reassurance of a private, quiet and very well-maintained complex. Enjoying an easy stroll to Hill Street Grocer, Smolt Kitchen and Lansdowne Caf  , this home delivers outstanding lifestyle convenience in a highly desirable inner-city location.

With contemporary finishes, a practical and well-considered layout, and strong low-maintenance appeal, this townhouse represents an exceptional opportunity for professionals, downsizers or investors seeking quality, security and lifestyle convenience in West Hobart.

- Land Area 232.00 square metres
- Building Area: 148.00 square metres
- Bedrooms: 2
- Bathrooms: 2
- Double garage

CONTACT DETAILS

Elders Hobart
5 Victoria Street
HOBART, TAS
03 6220 6999

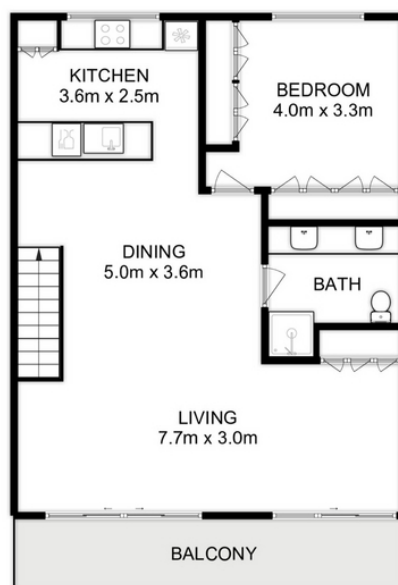
Tay Smook
0480 197 558







LOWER LEVEL



UPPER LEVEL



Total Approx. Floor Area (Incl. Garage) : 148 sqm
Total Approx. Courtyard Area : 26 sqm

All measurements are internal and approximate.
This plan is a sketch for illustration, not valuation.
Produced by Open2view.com