



Part 287 Main Road, GLENORCHY, TAS 7010

Fully-Equipped Workshop with 4-Hoist Capability & Amenities

The particulars contained herein are supplied for information only and shall not be taken as a representation in any respect on the part of the vendor or its agent. Interested parties should contact the nominated person or office for full and current details.

Elders Commercial is pleased to present a new automotive servicing facility positioned in the heart of Glenorchy's bustling commercial precinct.

Offering 317 sqm*, this tenancy has been thoughtfully designed to accommodate up to four hoists, with potential for integrated servicing equipment to be included as part of the lease. Amenities including a lunchroom and bathroom provide a functional and comfortable environment for staff. Car parking is also available for both customers and employees.

Strategically located on Glenorchy's Main Road, the property benefits from outstanding exposure and ease of access, providing an ideal premise for automotive service operators seeking to capitalise on a well-established trade catchment.

Key Features:

- 317 sqm* building area
- Potential to include 4 hoists and fixed servicing equipment in lease
- Lunchroom and bathroom amenity
- Car parking available
- Prime position within a major commercial precinct

For more information or to arrange an inspection, please contact George Burbury.

*Approx

- Land Area 317.00 square metres
- Commercial Type:
- Building Area: 317.00 square metres
- Zoning: Commercial

TYPE: For Lease

INTERNET ID: SU114420

RENTAL DETAILS

Rent / Lease:

[Contact Agent](#)

CONTACT DETAILS

SURGA Hobart

5 Victoria Street

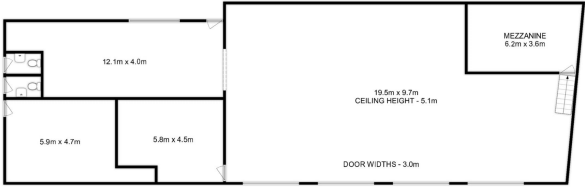
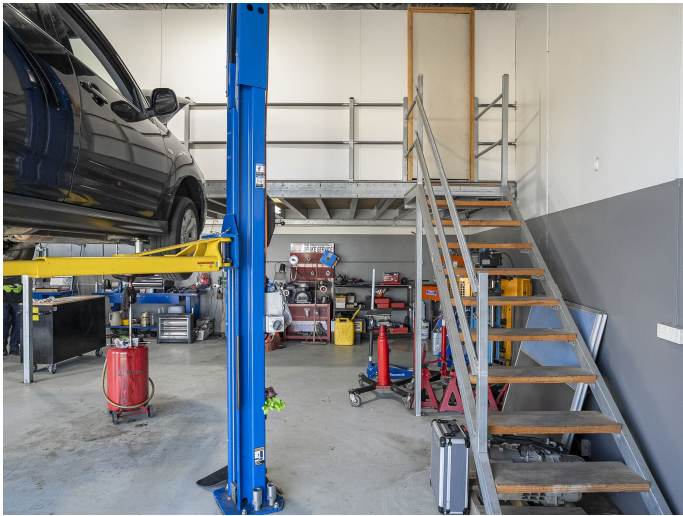
HOBART, TAS

03 6220 6999

George Burbury

0408 333 523





Total Approx. Building Area : 317 sqm (inc. mezzanine)

All measurements are internal and approximate.
This plan is a sketch for illustration, not valuation.
Produced by Open2view.com