



Outline indicative only



41-43 Victoria Street, HOBART, TAS 7000

Prime CBD Office Adjacent to Centrepont, with Natural Light.

The particulars contained herein are supplied for information only and shall not be taken as a representation in any respect on the part of the vendor or its agent. Interested parties should contact the nominated person or office for full and current details.

Elders Tasmania is pleased to present this first-floor office suite offering exceptional convenience in Hobart's CBD.

Featuring extensive natural light, high ceilings, and a flexible open-plan layout, the space is ideal for a range of commercial uses. Air-conditioned and with access to shared amenities, it's ready for immediate occupation.

Located in the heart of Hobart's CBD, this tenancy is surrounded by key amenities including Centrepont Shopping Centre, public transport, cafes, and retail shops. Its position adjacent to the Centrepont car park ensures easy access for staff and clients, making it a highly practical and connected location.

For all enquiries, please contact James Black 0498 314 340 or George Burbury 0408 333 523.

- Commercial Type:
- Building Area: 48.00 square metres

TYPE: For Lease

INTERNET ID: SU114436

CONTACT DETAILS

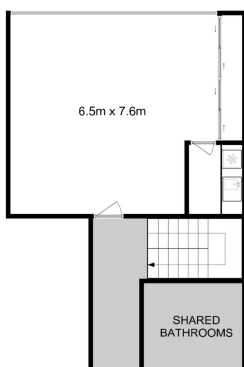
SURGA Hobart

5 Victoria Street
HOBART, TAS
03 6220 6999

Richard Steedman

0408 559 046





Total Approx. Floor Area : 50 sqm

All measurements are internal and approximate.
This plan is a sketch for illustration, not valuation.
Produced by Open2view.com