

## 11 Anatola Court, LATROBE, TAS 7307

### Modern Warehouse Asset

Elders Commercial has the exclusive privilege to offer for sale three light industrial strata units in Latrobe.

Upon completion, Shed 4 will comprise a 162sqm\* metal clad, portal frames warehouse, situated on a secure strata area of 341 sqm\* (subject to survey). The site is

**TYPE:** For Sale

**INTERNET ID:** SU114483

**SALE DETAILS**

**Offers over**

The particulars contained herein are supplied for information only and shall not be taken as a representation in any respect on the part of the vendor or its agent. Interested parties should contact the nominated person or office for full and current details.



complemented with security fencing to the perimeter, concrete driveway access and sealed common area parking.

Construction is proposed to be completed by September 2025, with strata titles anticipated to be issued by LTO late 2025\*.

Shed 4, 11 Anatola Court is ideal for owner-occupiers or investors seeking an affordable industrial warehouse premises, in a popular and rapidly growing industrial precinct east of Latrobe.

Please contact Clinton O'Keefe or Nicholas Bond at Elders Commercial for more information or to arrange an inspection.

\* Approximate

- Commercial Type:
- Building Area: 162.00 square metres
- Zoning: Light Industrial

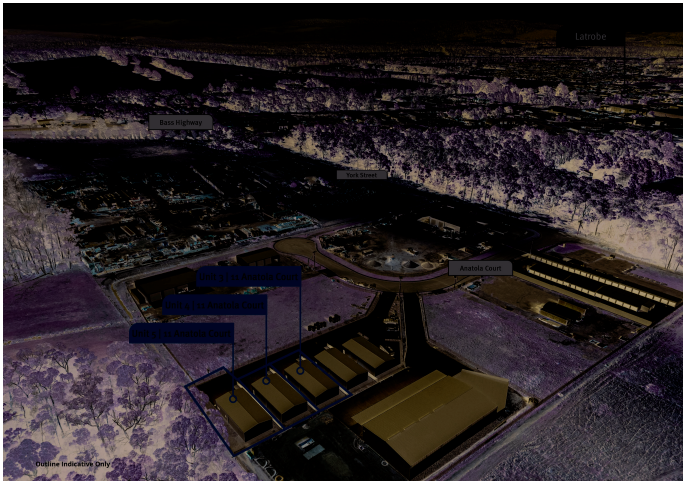
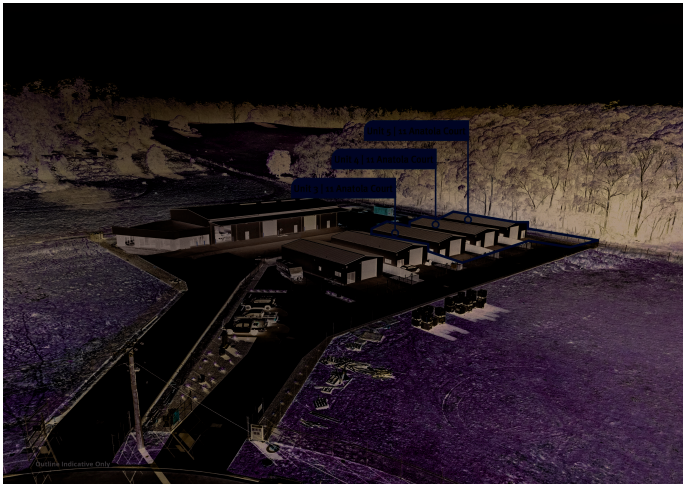
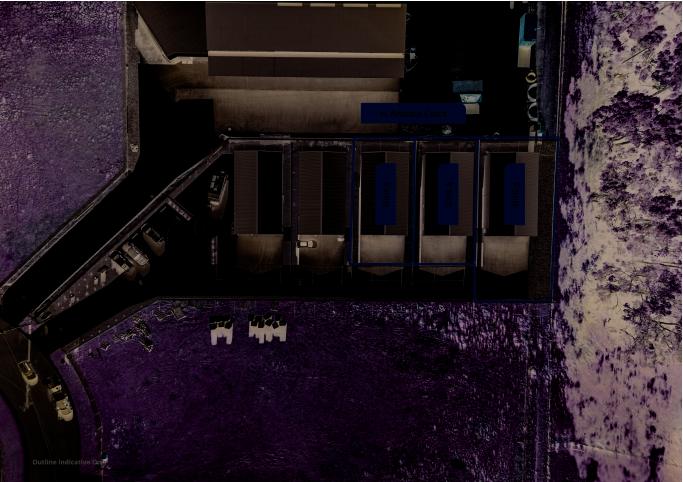
**\$430,000+GST**

**CONTACT DETAILS**

**SURGA Devonport**  
4 Stewart Street  
DEVONPORT, TAS  
03 6424 3568

**Clinton O'Keefe**  
0419 610 877





The particulars contained herein are supplied for information only and shall not be taken as a representation in any respect on the part of the vendor or its agent. Interested parties should contact the nominated person or office for full and current details.