



## 100 Melville Street, HOBART, TAS 7000

Flexible Ground Floor Space in A-Grade Building

The particulars contained herein are supplied for information only and shall not be taken as a representation in any respect on the part of the vendor or its agent. Interested parties should contact the nominated person or office for full and current details.



100 Melville Street is recognised as one of Hobart's premier A-Grade office buildings and is home to a quality tenant mix including KPMG, AON Insurance, Jacobs Engineering and MyState Financial.

The tenancy is located on the ground floor and provides 330 sqm\* of "as new", A-grade office accommodation. The open-plan layout offers excellent flexibility, allowing tenants to configure the space to suit a range of business needs.

With direct frontage to the building's main entrance and lift lobby, the tenancy enjoys outstanding visibility, easy accessibility and strong client presence within this landmark property.

Tenants benefit from secure basement car parking, convenient bicycle storage and quality end-of-trip facilities

Available 1 January 2026.

For more information or to arrange an inspection, contact Richard Steedman or James Black.

- Commercial Type:
- Building Area: 330.00 square metres
- Zoning: Central Business

**TYPE:** For Lease

**INTERNET ID:** SU114697

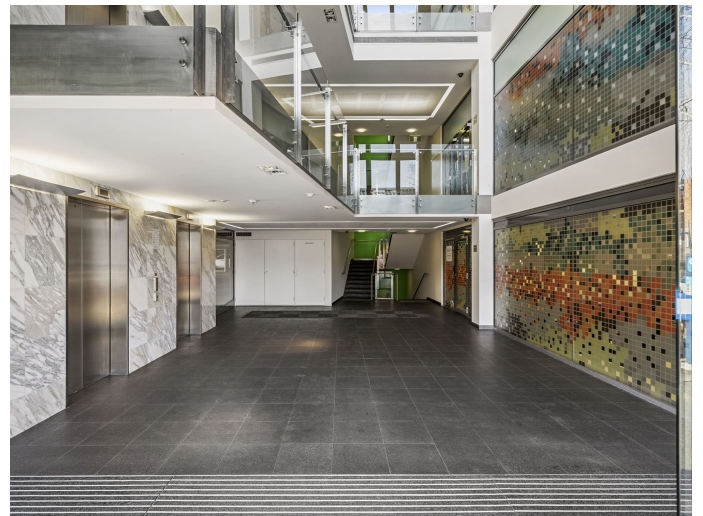
#### CONTACT DETAILS

**SURGA Hobart**

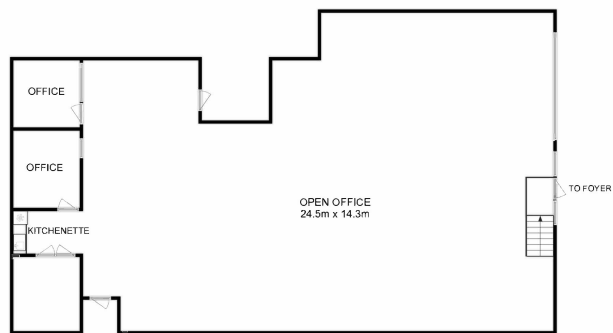
5 Victoria Street  
HOBART, TAS  
03 6220 6999

**Richard Steedman**

0408 559 046







All measurements are internal and approximate.  
This plan is a sketch for illustration, not valuation.  
Produced by Open2view.com