



28-30 Gladstone Road, ALLENSTOWN, QLD 4700

HIGH PROFILE RETAIL / INDUSTRIAL TENANCY – BRUCE HIGHWAY EXPOSURE

Knight Frank Rockhampton & Region is pleased to present 28-30 Gladstone Road, Allenstown a rare opportunity to secure a highly visible retail/industrial premises available from December 2025.

Prominently positioned on the Bruce Highway, the property offers outstanding exposure to high volumes of passing traffic, excellent signage opportunities, and convenient

TYPE: For Lease

INTERNET ID: SU114742

CONTACT DETAILS

**Elders Commercial
Rockhampton**

The particulars contained herein are supplied for information only and shall not be taken as a representation in any respect on the part of the vendor or its agent. Interested parties should contact the nominated person or office for full and current details.

off-street parking.

Key Features:

- 879 sqm* allotment with excellent site presence
- 475 sqm* under roof, comprising showroom, offices, mezzanine, and high-clearance workshop
- Outstanding Bruce Highway frontage and signage exposure
- Off-street car parking for customers and staff
- Versatile layout to suit a wide range of users

This property presents a fantastic opportunity for businesses seeking a combination of showroom presence, office functionality, and industrial practicality in a prime location.

For further details or to arrange an inspection, please contact the exclusive marketing agent Jonathon Offord at Knight Frank Rockhampton & Region.

- Commercial Type:
- Building Area: 475.00 square metres

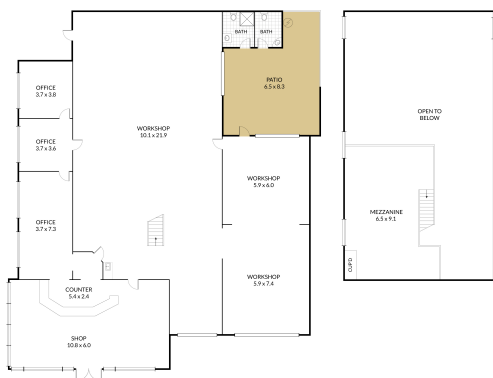
Level 2/102 Bolsover St
Rockhampton City, QLD
07 4921 2347

Jonathon Offord
0488 270 174





28-30 Gladstone Road, **Rockhampton City**



NOTE: Every precaution has been taken to verify the accuracy of the above details. However, prospective purchasers are advised to make their own enquiries.