



98 Sunderland Street, DERWENT PARK, TAS 7009

High Exposure Industrial Unit in Prime Derwent Park

Elders Commercial is pleased to present Unit 3, 98 Sunderland Street, Derwent Park - an exceptional leasing opportunity in one of Greater Hobart's most tightly held industrial precincts.

TYPE: For Lease

INTERNET ID: SU114747

The particulars contained herein are supplied for information only and shall not be taken as a representation in any respect on the part of the vendor or its agent. Interested parties should contact the nominated person or office for full and current details.

Positioned in the heart of Derwent Park, this light industrial unit offers excellent connectivity to Hobart's CBD (approx. 7km), major arterial roads, and nearby commercial hubs including Moonah and Glenorchy. The area continues to attract national and local occupiers due to its strategic location and industrial pedigree.

Comprising 247sqm* of well-maintained warehouse, the unit features a clear-span layout with front roller door access, concrete flooring, and good internal height, providing flexibility for a wide range of industrial or service-based users.

This is a rare opportunity to secure a functional and well-located tenancy in a market where industrial leasing options are increasingly scarce.

For more information or to arrange an inspection please contact Liam Coyle.

*Approximate

- Land Area 283.00 square metres
- Commercial Type:
- Building Area: 247.00 square metres
- Zoning: Light Industrial
- Outgoings: 8645

RENTAL DETAILS

Rent / Lease:

**Contact Elders
Commercial**

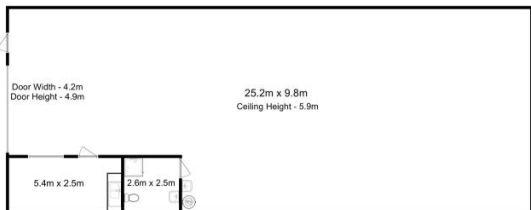
CONTACT DETAILS

Elders Hobart
5 Victoria Street
HOBART, TAS
03 6220 6999

Liam Coyle
0407 868 370



DERWENT PARK
Unit 3/98 Sunderland Street
Floor Area : 247 sqm



IMPORTANT: measurements are approximate interested parties need to verify

The particulars contained herein are supplied for information only and shall not be taken as a representation in any respect on the part of the vendor or its agent. Interested parties should contact the nominated person or office for full and current details.