

134-136 Main Road, MOONAH, TAS 7009

High Profile, High Quality Offices with Parking

Positioned in the vibrant heart of Moonah's commercial precinct, Level 1, 134-136 Main Road presents an excellent opportunity to secure a 309sqm* office tenancy that combines functionality with a highly accessible location.

The tenancy has been extensively refurbished in recent times and provides a flexible layout including a large open-plan workspace, several private offices, and a spacious boardroom, providing plenty of scope for a variety of professional uses.

Large windows throughout provide excellent natural light and local views, creating a bright and welcoming work environment. A well-appointed kitchen and four separate toilets enhance convenience for staff and clients alike.

Offering excellent exposure to passing traffic and easy access directly from Main Road, the property also provides valuable signage opportunities (STCA) and includes six onsite car parks, a rare benefit in such a central location.

For all enquiries or to arrange an inspection, contact Richard Steedman or James Black.

*Approx

- Commercial Type:
- Building Area: 309.00 square metres
- Zoning: Commercial

TYPE: For Lease

INTERNET ID: SU114760

CONTACT DETAILS

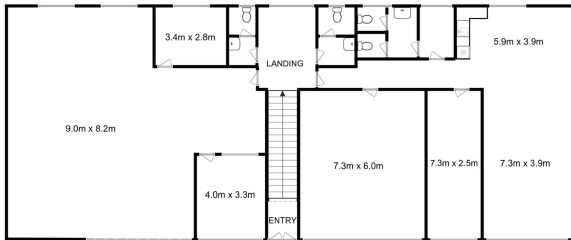
Elders Hobart
5 Victoria Street
HOBART, TAS
03 6220 6999

Richard Steedman
0408 559 046



Indicative outline only





Total Approx. Floor Area : 309 sqm

All measurements are internal and approximate.
This plan is a sketch for illustration, not valuation.
Produced by Open2view.com