



198 Alma Street, ROCKHAMPTON CITY, QLD 4700

FUNCTIONAL INDUSTRIAL FACILITY WITH DUAL ACCESS

Positioned on a prominent 855 sqm* dual access site, this practical industrial property offers excellent drive-through capability and functional improvements suitable for a range of users.

Property Features:

The particulars contained herein are supplied for information only and shall not be taken as a representation in any respect on the part of the vendor or its agent. Interested parties should contact the nominated person or office for full and current details.

TYPE: Sold

INTERNET ID: SU115129

CONTACT DETAILS

**Elders Commercial
Rockhampton**

- 855 sqm* fully fenced, dual access site
- 250 sqm* high-clearance shed
- Includes 25 sqm* of air-conditioned office and staff amenities
- Additional 25 sqm* mezzanine storage
- Concrete rear hardstand area
- Side access
- 3 phase power supply
- High clearance roller doors for easy access
- Amenities include toilet, kitchenette and shower
- Excellent connectivity to the Bruce Highway via Derby Street

Level 2/102 Bolsover St
Rockhampton City, QLD
07 4921 2347

Jonathon Offord
0488 270 174

This property represents a fantastic opportunity in a market where industrial offerings are extremely rare.

For further information or to arrange an inspection, contact Jonathon Offord from Knight Frank Rockhampton & Region.

*Approximate area only

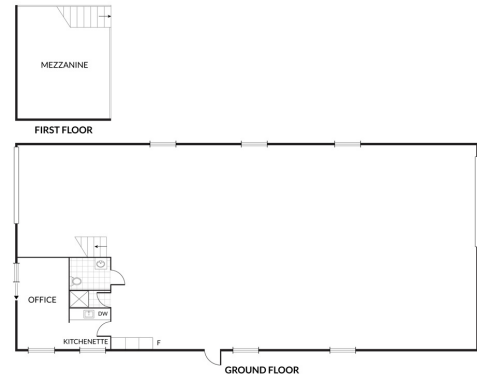
- Commercial Type:
- Building Area: 275.00 square metres





198 Alma Street, Rockhampton City 

Elders
Commercial



NOTE: Every precaution has been taken to verify the accuracy of the above details. However, prospective purchasers are advised to make their own enquiries.